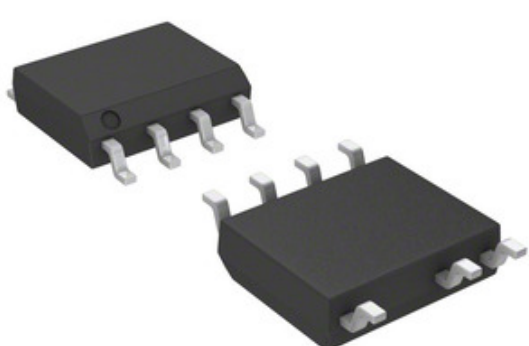


ON Semiconductor **AMI Semiconductor / ON**

## NCP1246BD100R2G

Tau Wae: NCP1246BD100R2G  
 Kaihanga / Waitohu: AMI Semiconductor / ON Semiconductor  
 Whakaahuatanga hua: IC OFF-LINE CNTRLR PWM CM 8SOIC  
 Ngā Rauemi: NCP1246BD100R2G.pdf  
 RoHS Tūnga: Whakahaerehia te kore utu / RoHS  
 Tuhiinga mai i: Hong Kong  
 Te Ara Tuhi: DHL/Fedex/TNT/UPS/EMS

### Semiconductor



Ko te whakaahua he tohu. Tirohia nga korero mo nga taipitopito hua.

**TONO MO TE WHAKAHUA**

### Ngā whakaaturanga o NCP1246BD100R2G

TAU WAE	NCP1246BD100R2G
KAIHANGA	AMI Semiconductor / ON Semiconductor
WHAKAAHUATANGA	IC OFF-LINE CNTRLR PWM CM 8SOIC
WHAKAHAERE TOKO WHAKAHAERE / ROHS TŪNGA	Whakahaerehia te kore utu / RoHS
PEPA RARAUNGA	NCP1246BD100R2G.pdf
NGAOHIHI - WHAKAAETANGA (VCC / VDD)	8.9 V ~ 28 V
MOMOTUHI - TĪMATA AKE	12V
TUHINGA O MUA - BREAKDOWN	-
TOPOLOGY	Flyback
PŪRERE PŪRERE WHAKARATO	7-SOIC
RAUPAPA	-
PACKAGING	Tape & Reel (TR)
PAA / CASE	8-SOIC (0.154", 3.90mm Width), 7 Leads
WHAKAMOTU WHAKAPUTA	Isolated
TAE MAHI	-40°C ~ 150°C (TJ)
MOMO TAE	Surface Mount
TAUMATA WHAKAARO MOE (MSL)	1 (Unlimited)
TE TAE KAITUKU TAEKE	34 Weeks
WHAKAHAERE TOKO WHAKAHAERE / ROHS TŪNGA	Lead free / RoHS Compliant
WHAKAWHITI WHAIARO (S)	No
RAUTANGA - WHAKAWHITI	100kHz
TIAKI WHAKAMUTUNGA	Current Limiting, Over Load, Over Power, Over Temperature, Over Voltage
TAKAHANGA TAUMAHĪ	80%
WHAKAAHUATANGA TAIPITOPITO	Converter Offline Flyback Topology 100kHz 7-SOIC
NGĀ ĀHUATANGA MANA	-
TAU WAE TUAKIRI	NCP1246

### Ngā tūtohu e hāngai ana

AMI Semiconductor / ON Semiconductor NCP1246BD100R2G	Kaitoha NCP1246BD100R2G	Kaiwhakarato NCP1246BD100R2G
Utu NCP1246BD100R2G	Pikitia NCP1246BD100R2G	Whakaahua NCP1246BD100R2G
NCP1246BD100R2G Pepa Raraunga PDF	NCP1246BD100R2G Tango Whakahoki	Tapunga NCP1246BD100R2G
Hokona NCP1246BD100R2G	Hokona NCP1246BD100R2G	Hokona AMI Semiconductor / ON Semiconductor NCP1246BD100R2G
AMI Semiconductor / ON Semiconductor NCP1246BD100R2G	Kaiwhakarato AMI Semiconductor / ON Semiconductor	Kaitoha Kaatawhai AMI Semiconductor / ON Semiconductor
AMI Semiconductor / ON Semiconductor NCP1246BD100R2G	ON Semiconductor NCP1246BD100R2G	Aptina / ON Semiconductor NCP1246BD100R2G
Catalyst Semiconductor / ON Semiconductor NCP1246BD100R2G	PulseCore Semiconductor / ON Semiconductor NCP1246BD100R2G	Sanyo Semiconductor / ON Semiconductor NCP1246BD100R2G

### Ngā Hua e hāngai ana

<p><b>NCP1247AD065R2G</b>                  Kaihanga: AMI Semiconductor / ON Semiconductor                  Whakaahuatanga: IC OFF-LINE CNTRLR PWM CM                  I roto i te taonga: Out stock  <a href="#">RFQ</a></p>	<p><b>NCP1246ALD100R2G</b>                  Kaihanga: AMI Semiconductor / ON Semiconductor                  Whakaahuatanga: IC CTRL CURR MODE 100KHZ 8SOIC                  I roto i te taonga: Out stock  <a href="#">RFQ</a></p>
<p><b>NCP1246BLD100R2G</b>                  Kaihanga: AMI Semiconductor / ON Semiconductor                  Whakaahuatanga: IC CTRL CURR MODE 100KHZ 8SOIC                  I roto i te taonga: Out stock  <a href="#">RFQ</a></p>	<p><b>NCP1244BD100R2G</b>                  Kaihanga: AMI Semiconductor / ON Semiconductor                  Whakaahuatanga: IC OFF-LINE CNTRLR PWM CM 7SOIC                  I roto i te taonga: Out stock  <a href="#">RFQ</a></p>
<p><b>NCP1246ALD065R2G</b>                  Kaihanga: AMI Semiconductor / ON Semiconductor                  Whakaahuatanga: IC CTRL CURR MODE 65KHZ 8SOIC                  I roto i te taonga: Out stock  <a href="#">RFQ</a></p>	<p><b>NCP1246AD100R2G</b>                  Kaihanga: AMI Semiconductor / ON Semiconductor                  Whakaahuatanga: IC OFF-LINE CNTRLR PWM CM 8SOIC                  I roto i te taonga: Out stock  <a href="#">RFQ</a></p>
<p><b>NCP1247BD100R2G</b>                  Kaihanga: AMI Semiconductor / ON Semiconductor                  Whakaahuatanga: IC OFF-LINE CNTRLR PWM CM                  I roto i te taonga: Out stock  <a href="#">RFQ</a></p>	<p><b>NCP1247BD065R2G</b>                  Kaihanga: AMI Semiconductor / ON Semiconductor                  Whakaahuatanga: IC OFF-LINE CNTRLR PWM CM                  I roto i te taonga: Out stock  <a href="#">RFQ</a></p>
<p><b>NCP1247AD100R2G</b>                  Kaihanga: AMI Semiconductor / ON Semiconductor                  Whakaahuatanga: IC OFF-LINE CNTRLR PWM CM                  I roto i te taonga: Out stock  <a href="#">RFQ</a></p>	<p><b>NCP1246AD065R2G</b>                  Kaihanga: AMI Semiconductor / ON Semiconductor                  Whakaahuatanga: IC OFF-LINE CNTRLR PWM CM 8SOIC                  I roto i te taonga: Out stock  <a href="#">RFQ</a></p>
<p><b>NCP1246BD065R2G</b>                  Kaihanga: AMI Semiconductor / ON Semiconductor                  Whakaahuatanga: IC OFF-LINE CNTRLR PWM CM 8SOIC                  I roto i te taonga: Out stock  <a href="#">RFQ</a></p>	<p><b>NCP1246BLD065R2G</b>                  Kaihanga: AMI Semiconductor / ON Semiconductor                  Whakaahuatanga: IC CTRL CURR MODE 65KHZ 8SOIC                  I roto i te taonga: Out stock  <a href="#">RFQ</a></p>