



International Rectifier (Infineon Technologies)

## BSP77 E6327

Tau Wae: BSP77 E6327

Kaihanga / Waitohu: International Rectifier (Infineon Technologies)

Whakaahuatanga hua: IC PWR SWITCH 42V 2.17A SOT223-4

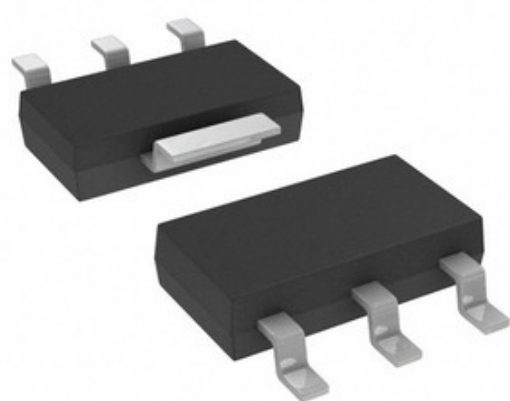
Ngā Rauemi: BSP77 E6327.pdf

RoHS Tūnga: Whakahaerehia te kore utu / RoHS

Tuhinga mai i: Hong Kong

Te Ara Tuhi: DHL/Fedex/TNT/UPS/EMS

### Technologies



Ko te whakaahua he tohu. Tirohia nga korero mo nga taipitopito hua.

**TONO MO TE WHAKAHUA**

### Ngā whakaaturanga o BSP77 E6327

TAU WAE	BSP77 E6327
KAIHANGA	International Rectifier (Infineon Technologies)
WHAKAAHUATANGA	IC PWR SWITCH 42V 2.17A SOT223-4
WHAKAHAERE TOKO WHAKAHAERE / ROHS TŪNGA	Whakahaerehia te kore utu / RoHS
PEPA RARAUNGA	BSP77 E6327.pdf
NGAOHIHI - WHAKAAETANGA (VCC / VDD)	Not Required
NGAOHIHI - TAE	42V (Max)
MOMO WHAKAWHITI	General Purpose
PŪRERE PŪRERE WHAKARATO	PG-SOT223-4
RAUPAPA	HITFET®
ROTO I (TONO)	70 mOhm
RATONGA - WHAKAURU: WHAKAPUTA	1:1
PACKAGING	Tape & Reel (TR)
PAA / CASE	TO-261-4, TO-261AA
MOMO PUTANGA	N-Channel
WHIRIHORANGA WHAKAPUTA	Low Side
ĒTAHI INGOA	BSP77 E6327-ND BSP77E6327 BSP77E6327NT BSP77E6327T BSP77E6327T-ND BSP77E6433XT SP000011150
TAE MAHI	-40°C ~ 150°C (TJ)
TAU O NGA HUA	1
TAUMATA WHAKAARO MOE (MSL)	3 (168 Hours)
WHAKAHAERE TOKO WHAKAHAERE / ROHS TŪNGA	Lead free / RoHS Compliant
ATANGA	On/Off
MOMO INPUT	Non-Inverting
NGĀ ĀHUATANGA	Auto Restart
TIAKI WHAKAMUTUNGA	Current Limiting (Fixed), Over Temperature, Over Voltage
NAMA - WHAKAPUTA (MAX)	2.17A
TAU WAE TUAKIRI	BSP77

### Ngā tūtohu e hāngai ana

International Rectifier (Infineon Technologies) BSP77 E6327	Kaitoha BSP77 E6327	Kaiwhakarato BSP77 E6327
Utu BSP77 E6327	Pikitia BSP77 E6327	Whakaahua BSP77 E6327
BSP77 E6327 Pepa Raraunga PDF	BSP77 E6327 Tango Whakahoki	Tapunga BSP77 E6327
Hokona BSP77 E6327	Hokona BSP77 E6327	Hokona International Rectifier (Infineon Technologies) BSP77 E6327
International Rectifier (Infineon Technologies) BSP77 E6327	Kaiwhakarato International Rectifier (Infineon Technologies)	Kaitoha Kaatawhai International Rectifier (Infineon Technologies)
International Rectifier (Infineon Technologies) BSP77 E6327	International Rectifier BSP77 E6327	Infineon Technologies BSP77 E6327
International Rectifier (Infineon Technologies) BSP77 E6327	IR (Infineon Technologies) BSP77 E6327	

### Ngā Hua e hāngai ana

<p><b>BSP76E6433HUMA1</b> Kaihanga: International Rectifier (Infineon Technologies) Whakaahuatanga: IC SWITCH POWER LOSIDE SOT223-4 I roto i te taonga: Out stock</p> <p><b>RFQ</b></p>	<p><b>BSP762TXUMA1</b> Kaihanga: International Rectifier (Infineon Technologies) Whakaahuatanga: IC SWITCH SMART HIGH SIDE 8DSO I roto i te taonga: Out stock</p> <p><b>RFQ</b></p>
<p><b>BSP78HUMA1</b> Kaihanga: International Rectifier (Infineon Technologies) Whakaahuatanga: IC SWITCH POWER LOSIDE SOT223-4 I roto i te taonga: Out stock</p> <p><b>RFQ</b></p>	<p><b>BSP762TNT</b> Kaihanga: International Rectifier (Infineon Technologies) Whakaahuatanga: IC SWITCH SMART HIGH SIDE 8DSOP I roto i te taonga: Out stock</p> <p><b>RFQ</b></p>
<p><b>BSP78 E6327</b> Kaihanga: International Rectifier (Infineon Technologies) Whakaahuatanga: IC PWR SWITCH SMART LOW SOT223-4 I roto i te taonga: Out stock</p> <p><b>RFQ</b></p>	<p><b>BSP76E6433NT</b> Kaihanga: International Rectifier (Infineon Technologies) Whakaahuatanga: IC SWITCH POWER LOSIDE SOT223-4 I roto i te taonga: Out stock</p> <p><b>RFQ</b></p>
<p><b>BSP75NTA</b> Kaihanga: Diodes Incorporated Whakaahuatanga: MOSFET N-CH 60V 1.2A SOT-223 I roto i te taonga: Out stock</p> <p><b>RFQ</b></p>	<p><b>BSP772TNUMA1</b> Kaihanga: International Rectifier (Infineon Technologies) Whakaahuatanga: IC SWITCH SMART HIGH SIDE 8DSO I roto i te taonga: Out stock</p> <p><b>RFQ</b></p>
<p><b>BSP77E6433HUMA1</b> Kaihanga: International Rectifier (Infineon Technologies) Whakaahuatanga: IC SWITCH POWER LOSIDE SOT223-4 I roto i te taonga: Out stock</p> <p><b>RFQ</b></p>	<p><b>BSP76 E6327</b> Kaihanga: International Rectifier (Infineon Technologies) Whakaahuatanga: MOSFET 42V 1.4A N-CHAN SOT223 I roto i te taonga: Out stock</p> <p><b>RFQ</b></p>
<p><b>BSP88E6327</b> Kaihanga: International Rectifier (Infineon Technologies) Whakaahuatanga: MOSFET N-CH 240V 350MA SOT223 I roto i te taonga: Out stock</p> <p><b>RFQ</b></p>	<p><b>BSP772TXUMA1</b> Kaihanga: International Rectifier (Infineon Technologies) Whakaahuatanga: IC SWITCH SMART HIGH SIDE 8DSO I roto i te taonga: Out stock</p> <p><b>RFQ</b></p>

