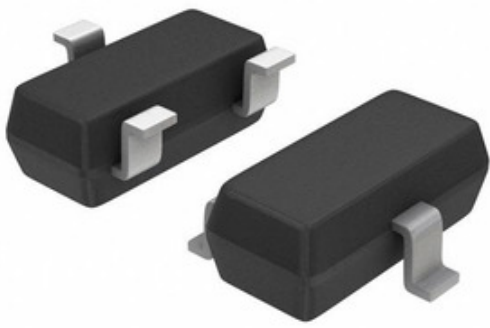


ON Semiconductor  AMI Semiconductor / ON

MAX809TTR

Tau Wae: MAX809TTR
 Kaihanga / Waitohu: AMI Semiconductor / ON Semiconductor
 Whakaahuatanga hua: IC MPU SUPERVISORY 3.08V SOT23
 Ngā Rauemi:  MAX809TTR.pdf
 RoHS Tūnga:  Kei roto nga rangatira / RoHS kaore i te ture
 Tuhinga mai i: Hong Kong
 Te Ara Tuhi: DHL/Fedex/TNT/UPS/EMS


Semiconductor



TONO MO TE WHAKAHUA

Ko te whakaahua he tohu. Tirohia nga korero mo nga taipitopito hua.

Ngā whakaaturanga o MAX809TTR

TAU WAE	MAX809TTR
KAIHANGA	AMI Semiconductor / ON Semiconductor
WHAKAAHUATANGA	IC MPU SUPERVISORY 3.08V SOT23
WHAKAHAERE TOKO WHAKAHAERE / ROHS TŪNGA	Kei roto nga rangatira / RoHS kaore i te ture
PEPA RARAUNGA	 MAX809TTR.pdf
PUTANGA - TAE	3.08V
MOMO	Simple Reset/Power-On Reset
PŪRERE PŪRERE WHAKARATO	SOT-23-3 (TO-236)
RAUPAPA	-
TAUTUHI TAUTUHI	140 ms Minimum
TAUTUHI ANŌ	Active Low
PACKAGING	Tape & Reel (TR)
PAA / CASE	TO-236-3, SC-59, SOT-23-3
WHAKAPUTA	Push-Pull, Totem Pole
ĒTAHI INGOA	MAX809TTROSTR
TAE MAHI	-40°C ~ 105°C (TJ)
TE MAHA O NGA TAUMAHA AROTURUKI	1
MOMO TAE	Surface Mount
TAUMATA WHAKAARO MOE (MSL)	1 (Unlimited)
WHAKAHAERE TOKO WHAKAHAERE / ROHS TŪNGA	Contains lead / RoHS non-compliant
WHAKAAHUATANGA TAIPITOPITO	Supervisor Push-Pull, Totem Pole 1 Channel SOT-23-3 (TO-236)
TAU WAE TUAKIRI	MAX809

Ngā tūtohu e hāngai ana

AMI Semiconductor / ON Semiconductor MAX809TTR	Kaitoha MAX809TTR	Kaiwhakarato MAX809TTR
Utu MAX809TTR	Pikitia MAX809TTR	Whakaahua MAX809TTR
MAX809TTR Pepa Raraunga PDF	MAX809TTR Tango Whakahoki	Tapunga MAX809TTR
Hokona MAX809TTR	Hokona MAX809TTR	Hokona AMI Semiconductor / ON Semiconductor MAX809TTR
AMI Semiconductor / ON Semiconductor MAX809TTR	Kaiwhakarato AMI Semiconductor / ON Semiconductor	Kaitoha Kaatawhai AMI Semiconductor / ON Semiconductor
AMI Semiconductor / ON Semiconductor MAX809TTR	ON Semiconductor MAX809TTR	Aptina / ON Semiconductor MAX809TTR
Catalyst Semiconductor / ON Semiconductor MAX809TTR	PulseCore Semiconductor / ON Semiconductor MAX809TTR	Sanyo Semiconductor / ON Semiconductor MAX809TTR

Ngā Hua e hāngai ana

 <p>MAX809TEUR+T10 Kaihanga: Maxim Integrated Whakaahuatanga: IC RESET CIRC MPU SOT23-3 I roto i te taonga: Out stock RFQ</p>	 <p>MAX80K000D Kaihanga: Vishay Precision Group Whakaahuatanga: RES 80K OHM 0.5% 0.3W RADIAL I roto i te taonga: Out stock RFQ</p>
 <p>MAX809TEXR+T Kaihanga: Maxim Integrated Whakaahuatanga: IC RESET CIRC MPU SC70-3 I roto i te taonga: Out stock RFQ</p>	 <p>MAX809TEUR+T Kaihanga: Maxim Integrated Whakaahuatanga: IC MPU/RESET CIRC SOT23-3 I roto i te taonga: Out stock RFQ</p>
 <p>MAX809STR Kaihanga: AMI Semiconductor / ON Semiconductor Whakaahuatanga: IC MPU SUPERVISORY 2.93V SOT23 I roto i te taonga: Out stock RFQ</p>	 <p>MAX80K000B Kaihanga: Vishay Precision Group Whakaahuatanga: RES 80K OHM 0.1% 0.3W RADIAL I roto i te taonga: Out stock RFQ</p>
 <p>MAX809TEUR+TCEH Kaihanga: Maxim Integrated Whakaahuatanga: IC MPU/RESET CIRC I roto i te taonga: Out stock RFQ</p>	 <p>MAX809ZEXR+T Kaihanga: Maxim Integrated Whakaahuatanga: IC RESET CIRC MPU SC70-3 I roto i te taonga: Out stock RFQ</p>
 <p>MAX80K600B Kaihanga: Vishay Precision Group Whakaahuatanga: RES 80.6K OHM 0.1% 0.3W RADIAL I roto i te taonga: Out stock RFQ</p>	 <p>MAX809TTRG Kaihanga: AMI Semiconductor / ON Semiconductor Whakaahuatanga: IC MPU SUPERVISORY 3.08V SOT23 I roto i te taonga: Out stock RFQ</p>
 <p>MAX810LEUR+T Kaihanga: Maxim Integrated Whakaahuatanga: IC RESET CIRC MPU SOT23-3 I roto i te taonga: Out stock RFQ</p>	 <p>MAX809STRG Kaihanga: AMI Semiconductor / ON Semiconductor Whakaahuatanga: IC MPU SUPERVISORY 2.93V SOT23 I roto i te taonga: Out stock RFQ</p>