

TOSHIBA
Leading Innovation >>>

Toshiba Semiconductor and Storage

TLP181(GR,T)

Tau Wae:

TLP181(GR,T)

Kaihanga / Waitohu:

Toshiba Semiconductor and Storage

Whakaahuatanga hua

OPTOCOUPLER TRANS SOIC

Ngā Rauemi:

TLP181(GR,T).pdf

RoHS Tūnga

Kei roto nga rangatira / RoHS kaore i te ture

Tuhinga mai i

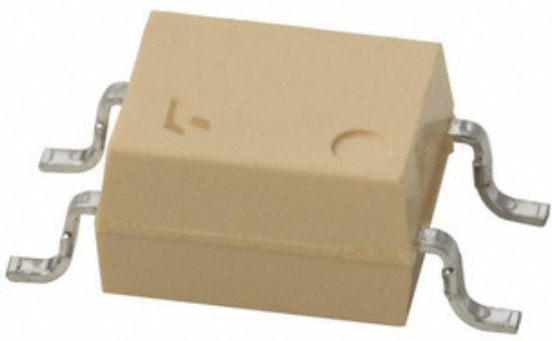
Hong Kong

Te Ara Tuhi

DHL/Fedex/TNT/UPS/EMS

TONO MO TE WHAKAHUA

Storage



Ko te whakaahua he tohu. Tirohia nga korero mo nga taipitopito hua.

Ngā whakaaturanga o TLP181(GR,T)

TAU WAE	TLP181(GR,T)
KAIHANGA	Toshiba Semiconductor and Storage
WHAKAAHUATANGA	OPTOCOUPLER TRANS SOIC
WHAKAHAERE TOKO WHAKAHAERE / ROHS TŪNGA	Kei roto nga rangatira / RoHS kaore i te ture
PEPA RARAUNGA	TLP181(GR,T).pdf
PUTANGA - WHAKAPUTA (MAX)	80V
PUTANGA - WHAKAMOTU	3750Vrms
PUKU - WHAKAMUA (VF) (TYP)	1.15V
TE UTU UTU (MAX)	400mV
TAHURI / HURIHIA TE WA (TOA)	3μs, 3μs
PŪRERE PŪRERE WHAKARATO	6-MFSOP, 4 Lead
RAUPAPA	-
TE WHAKATIKA / HINGA TE WĀ (TATAU)	2μs, 3μs
PACKAGING	Tape & Reel (TR)
PAA / CASE	6-SMD (4 Leads), Gull Wing
MOMO PUTANGA	Transistor
ĒTAHI INGOA	TLP181(GR) TLP181(GR,F,T) TLP181(GRFT) TLP181(GRT)
TAE MAHI	-55°C ~ 110°C
TE MAHA O NGA POUAKA	1
MOMO TAE	Surface Mount
TAUMATA WHAKAARO MOE (MSL)	1 (Unlimited)
WHAKAHAERE TOKO WHAKAHAERE / ROHS TŪNGA	Contains lead / RoHS non-compliant
MOMO INPUT	DC
WHAKAAHUATANGA TAIPITOPITO	Optoisolator Transistor Output 3750Vrms 1 Channel 6-MFSOP, 4 Lead
WHAKAWHITI WHAKAWHITI O NAIANEI (MIN)	100% @ 5mA
WHAKAWHITI WHAKAWHITI O NAIANEI (MAX)	300% @ 5mA
I TEIE NEI - WHAKAATU / CHANNEL	50mA
I TEIE NEI - DC WHAKAMUA (KI) (MAX)	50mA

Ngā tūtohu e hāngai ana

Toshiba Semiconductor and Storage TLP181(GR,T)	Kaitoha TLP181(GR,T)	Kaiwhakarato TLP181(GR,T)
Utu TLP181(GR,T)	Pikitia TLP181(GR,T)	Whakaahua TLP181(GR,T)
TLP181(GR,T) Pepa Raraunga PDF	TLP181(GR,T) Tango Whakahoki	Tapunga TLP181(GR,T)
Hokona TLP181(GR,T)	Hokona TLP181(GR,T)	Hokona Toshiba Semiconductor and Storage TLP181(GR,T)
Toshiba Semiconductor and Storage TLP181(GR,T)	Kaiwhakarato Toshiba Semiconductor and Storage	Kaitoha Kaatawhai Toshiba Semiconductor and Storage
Toshiba Semiconductor and Storage TLP181(GR,T)	Toshiba TLP181(GR,T)	

Ngā Hua e hāngai ana

<p>TLP182(GR,E) Kaihanga: Toshiba Semiconductor and Storage Whakaahuatanga: X36 PB-F TRANSISTOR OPTOCOUPLER I roto i te taonga: Out stock</p> <p>RFQ</p>	<p>TLP182(BL,E) Kaihanga: Toshiba Semiconductor and Storage Whakaahuatanga: X36 PB-F TRANSISTOR OPTOCOUPLER I roto i te taonga: Out stock</p> <p>RFQ</p>
<p>TLP176GA(F) Kaihanga: Toshiba Semiconductor and Storage Whakaahuatanga: SSR RELAY SPST-NO 120MA 0-400V I roto i te taonga: Out stock</p> <p>RFQ</p>	<p>TLP17CA Kaihanga: Littelfuse Inc. Whakaahuatanga: HI-REL TVS AXL HP TLP17 BI I roto i te taonga: Out stock</p> <p>RFQ</p>
<p>TLP176GA(TP,F) Kaihanga: Toshiba Semiconductor and Storage Whakaahuatanga: SSR RELAY SPST-NO 120MA 0-400V I roto i te taonga: Out stock</p> <p>RFQ</p>	<p>TLP176G(F) Kaihanga: Toshiba Semiconductor and Storage Whakaahuatanga: SSR RELAY SPST-NO 120MA 0-350V I roto i te taonga: 32 pcs</p> <p>RFQ</p>
<p>TLP17A Kaihanga: Littelfuse Inc. Whakaahuatanga: HI-REL TVS AXL HP TLP17 UNI I roto i te taonga: Out stock</p> <p>RFQ</p>	<p>TLP182(E) Kaihanga: Toshiba Semiconductor and Storage Whakaahuatanga: X36 PB-F TRANSISTOR OPTOCOUPLER I roto i te taonga: Out stock</p> <p>RFQ</p>
<p>TLP182(GB,E) Kaihanga: Toshiba Semiconductor and Storage Whakaahuatanga: X36 PB-F TRANSISTOR OPTOCOUPLER I roto i te taonga: Out stock</p> <p>RFQ</p>	<p>TLP182(BL-TPL,E) Kaihanga: Toshiba Semiconductor and Storage Whakaahuatanga: OPTOISO 3.75KV TRANS 6-SO 4 LEAD I roto i te taonga: Out stock</p> <p>RFQ</p>
<p>TLP182(GB-TPL,E) Kaihanga: Toshiba Semiconductor and Storage Whakaahuatanga: OPTOISO 3.75KV TRANS 6-SO 4 LEAD I roto i te taonga: Out stock</p> <p>RFQ</p>	<p>TLP179D(F) Kaihanga: Toshiba Semiconductor and Storage Whakaahuatanga: SSR RELAY SPST-NO 50MA 0-200V I roto i te taonga: Out stock</p> <p>RFQ</p>