

4.2 x 3.2mm Compact Tactile Switch

Features

Optimized Mechanical Features

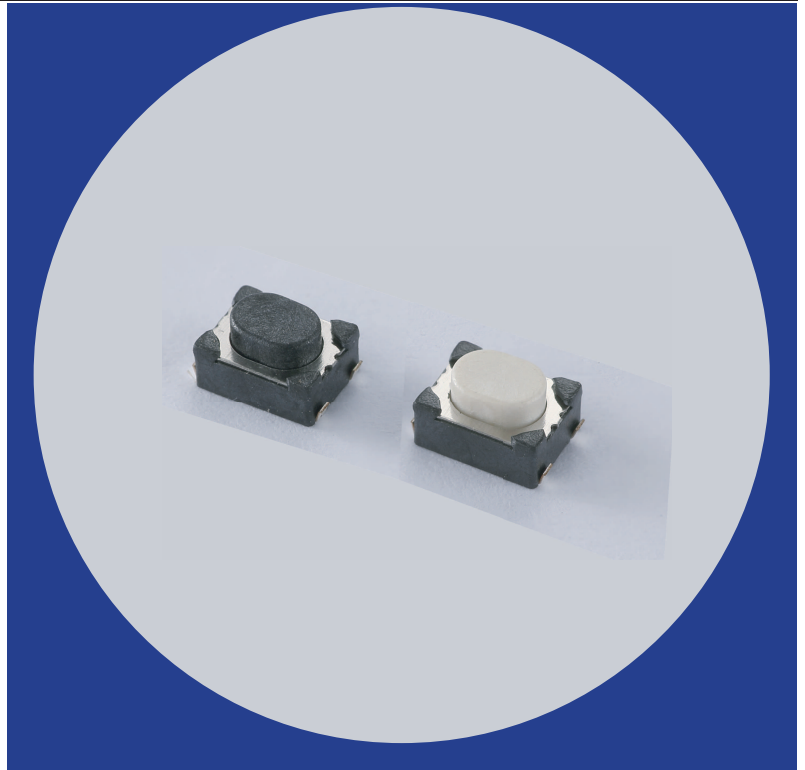
- Surface mount J bend terminal configuration
- Compatible with IR reflow and manual soldering
- Variety of operating force options

Optimized Contact System

- Excellent tactile feedback

Materials

- Silver coated terminals for better solderability
- High temperature materials (UL94V-0)
- RoHS compliant



Electrical and Mechanical Specifications

Switch Contact Resistance

500 milliohms maximum

Insulation Resistance

100 Megohms minimum between terminals

Maximum Rating

50mA, 16 VDC

Dielectric Strength

250 VAC for 1 minute between adjacent terminals

Operating Force

160 or 260gf

Travel

0.2 mm

Operating Temperature

- 40°C to +85°C

Storage Temperature

- 40°C to +85°C

Actuator Strength

3 Kgf maximum

Actuation Life

160 gf: 100,000 cycles

260 gf: 50,000 cycles

Allowable Solder Time

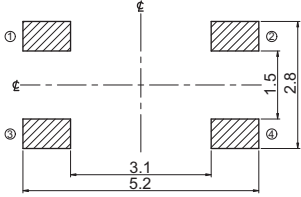
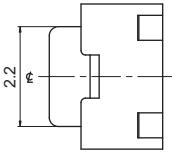
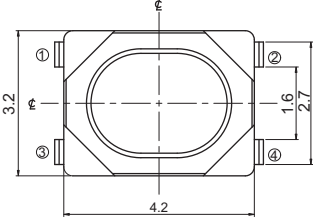
IR Reflow: Up to 5 seconds at 260°C.

Manual soldering: Up to 3 seconds at 350°C

Packaging

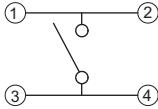
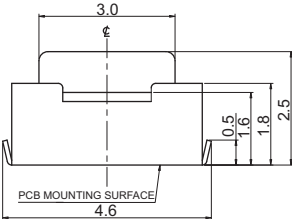
Standard: Tape and reel packaging with 330mm diameter reel and 12mm wide plastic tape

CTS SERIES 223EJ - Surface Mount J Bend Terminal



CIRCUIT DIAGRAM

PCB LAYOUT



DIMENSION : mm
STANDARD TOLERANCE :
.X (1 PLACE) : ±0.2

Ordering Information

223E - J V A A R

Termination
J: SURFACE MOUNT J BEND

Actuating Direction
V: VERTICAL

Actuator Height
A: 2.5mm

Actuator Force
A: 160 gf
B: 260 gf

Packaging
R: TAPE & REEL PACKAGING

Note:
Consult CTS for other common features not listed.